

1 NOVEMBA : OLGETA SANTU



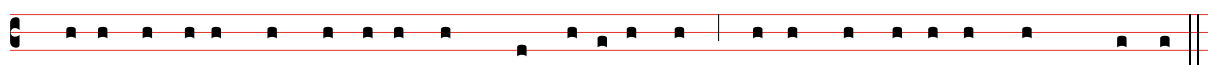
∇. Lord, i stap wantaim yupel-a. R̄. Na wantaim spi-rit bi-long yu.



∇. Ha-rim Gutnius bi-long Jis-as Krai, Ma-yu i rait-im.



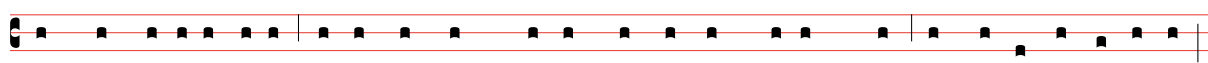
R̄. Ona long yu, Lord.



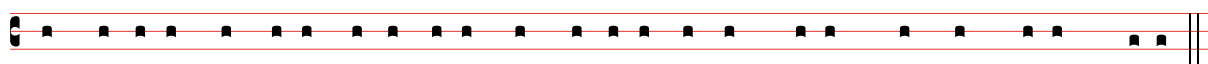
✠ Ji-sas i lukim ol bikpel-a lain manmer-i i kam, Na em i go antap long maunten.



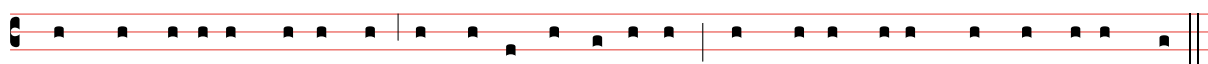
Em i sindaun, na ol disaipel bi-long en i kam long em. Na Jis-as i skul-im ol disaipel olsem,



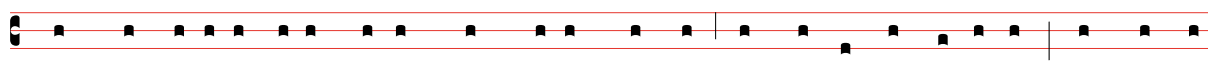
"Ol manmer-i i save, ol i stap rabis tru long ol samting bi-long God, Em ol i ken amamas.



Ol dispel-a manmer-i bai i kis-im ol gutpel-a samting bi-long kingdom bi-long heven.



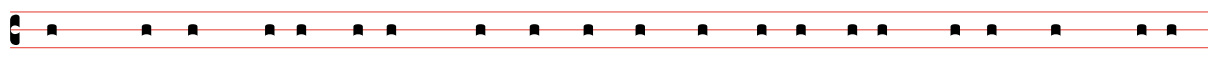
"Ol manmer-i i krai i stap, em ol i ken amamas. God bai i mekim gut bel bi-long ol.



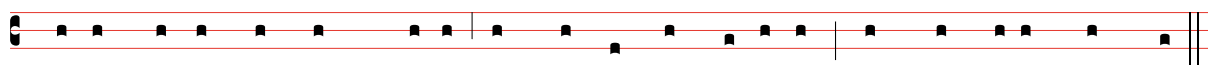
"Ol manmer-i i save daunim nem bi-long ol yet, em ol i ken amamas. Bai God i



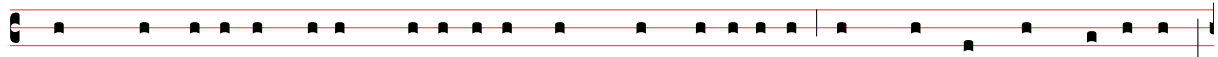
giv-im olget-a graun long ol. "Ol manmer-i i laikim tumas long bihainim stretpel-a pa-sin,



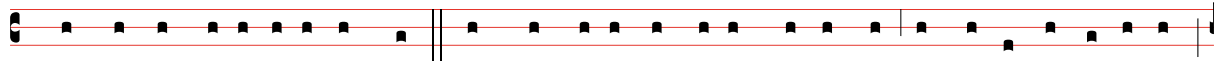
long wankain pa-sin olsem man i hangre tru na i laikim tumas long kis-im



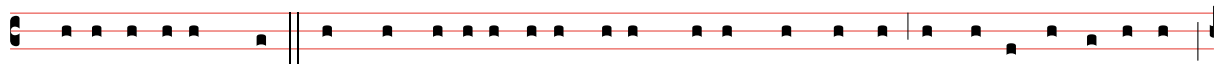
kaikai na i dai long wa-ra, em ol i ken amamas. Bai God inapim ol tru.



"Ol manmer-i i save mar-imar-i long ol a-rapel-a, em ol i ken amamas.



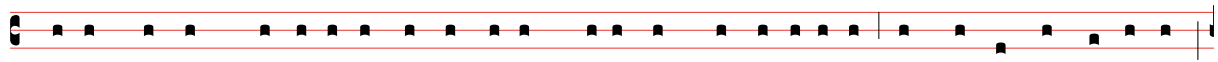
Bai God i mar-imar-i long ol." "Ol manmer-i bel bi-long ol i klin, em ol i ken amamas.



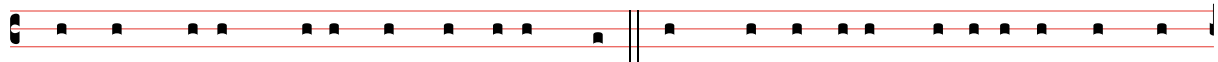
Bai ol i lukim God. "Ol manmer-i i save mekim dai ol kros na pait, em ol i ken amamas.



Bai ol i kol-im ol pik-i-nin-i bi-long God. "Ol manmer-i i save bihainim stretpel-a



pa-sin na long dispel-a as ol i kis-im hevi long ol a-rapel-a, em ol i ken amamas.



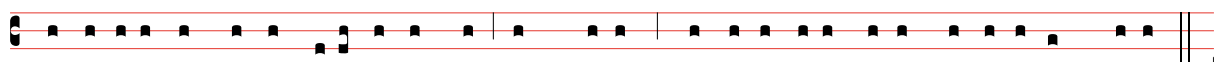
Kingdom bi-long heven em i bi-long ol. "Sapos ol i lukim yupel-a i stap long



lain bi-long mi, na ol i tok nogut long yupel-a na ol i mekim nogut long



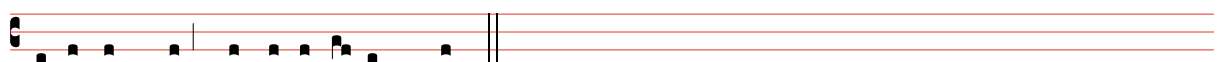
yupel-a na sut-im kain kain tok gi-aman long yupel-a, orait yupel-a i ken amamas.



Yupel-a i ken belgut na amamas tru, long wanem, Bikpel-a pe i wet-im yupel-a long heven."



Dispel-a em i Gutnius bi-long Bikpel-a.



Ona long yu, Bikpel-a Ji-sas Krai.